



AIR HOUSE

AND TENSION STRUCTURES

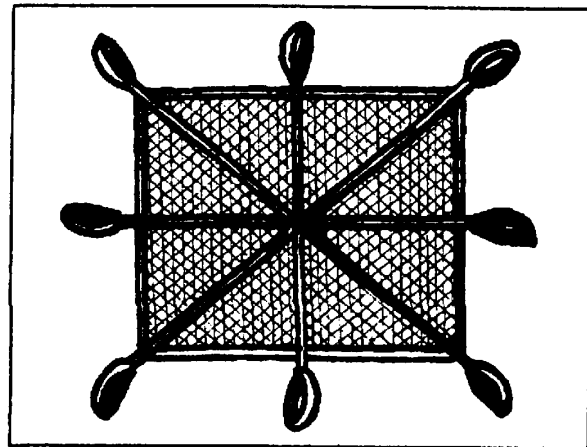
CONTRACT FABRICATION OF ONE PIECE
220 ft. x 700 ft. - 19,000 lbs.

AIR HOUSES, TENSION STRUCTURES,
BARRIER CURTAINS AND
OTHER ITEMS MADE TO YOUR SPECIFICATIONS.

CONCRETE DEMOLITION BLANKET

- PURPOSE:** The purpose of the Concrete Demolition Blanket is to make it easier to move broken concrete from construction demolition sites.
- MANUFACTURER:** Samsel Supply Company, 1285 Old River Road, Cleveland, Ohio 44113
Phone (216) 241-0333 Toll Free (800) 892-8012 Ohio (800) 892-6781
24 Hour Fax (216) 241-3426.
- FABRICATION:** 3 plys of treated polyester belt fabric with 4 nylon webbing straps attached to the bottom of the liner. This forms a blanket with 8 eyes to be used for lifting.
- CAPACITY:** The blanket has been tested with 6,000 pound loads. This gives a 2,000 pound load capacity with a 3 to 1 Safety Factor.
- LIMITATIONS:** This product is strictly made for the removal of concrete debris within the stated load capacity. It is NOT to be used to move people.
- SIZE:** Stocked sizes are
8' x 10'
Special sizes on
request.

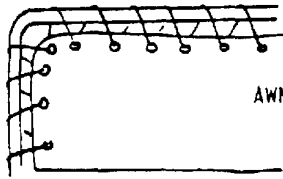
**SAVING TIME IS
SAVING MONEY.
TRY THE CONCRETE
DEMOLITION BLANKET
TODAY!**



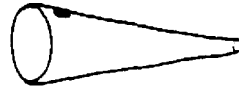
CONCRETE DEMOLITION BLANKET

CANVAS PRODUCTS made to order!

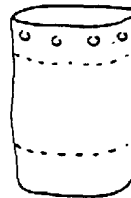
• SPECIAL BAGS • CONTAINER and MACHINERY COVERS • WINCHES • PARCEL BAGS
• HATCH COVERS • COLLISION MATS *Your* NEEDS made to *Your* SPECIFICATIONS.



AWNINGS

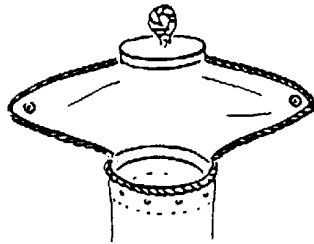
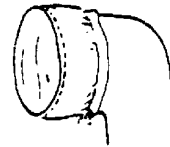


WIND SOCK

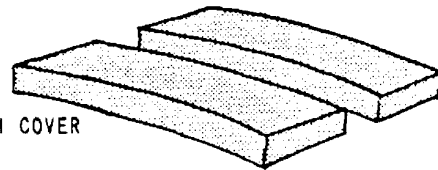


LAUNDRY BAG

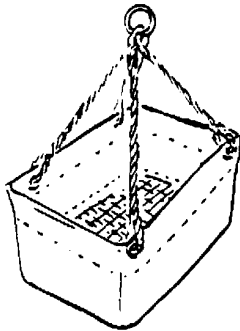
COWL COVER



WINDSAIL



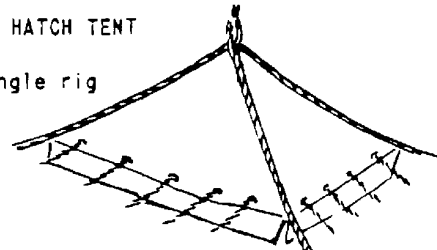
HATCH COVER



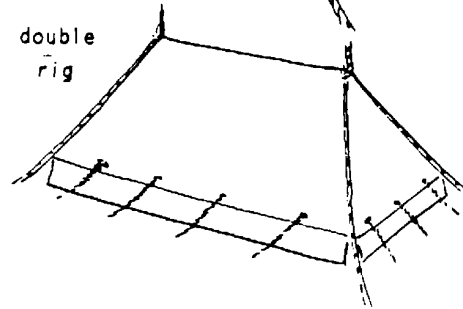
PARCEL BAG
Steel Rod Frame
#4 Duck with
Bridle and
Hoist Rope.
Screen or Solid
Bottom.

HATCH TENT

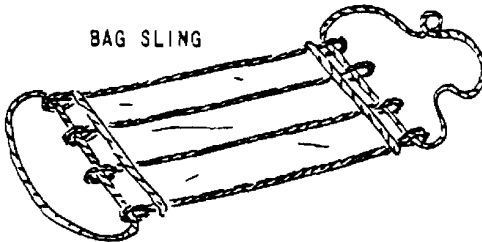
single rig



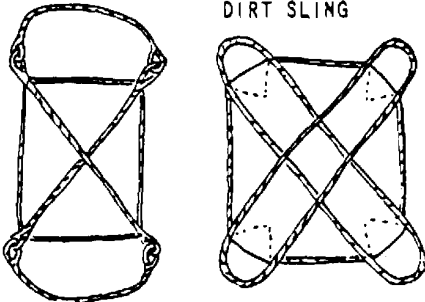
double rig



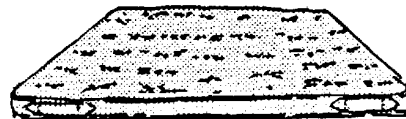
BAG SLING

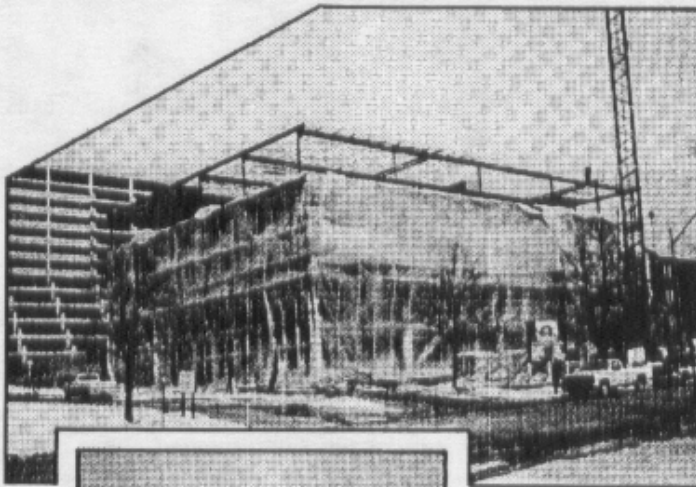


DIRT SLING

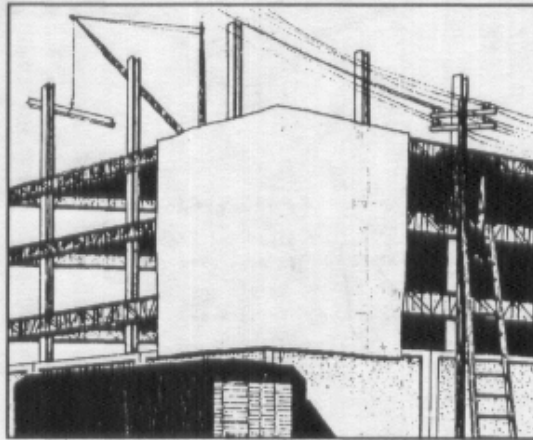
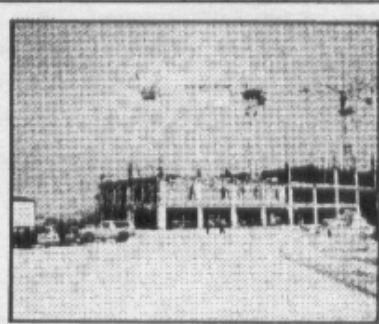


GYMNASIUM MAT





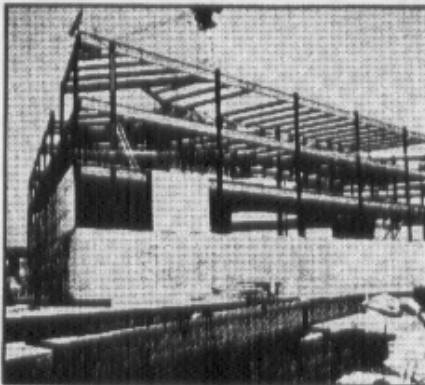
**TARPAULINS
AND
POLYETHYLENE
SHEETING
FOR
CONSTRUCTION
USE**



CONSTRUCTION ENCLOSURES

SCAFFOLD COVERS

WINDBREAKS



The workmen behind these covers are safe from wind and weather.

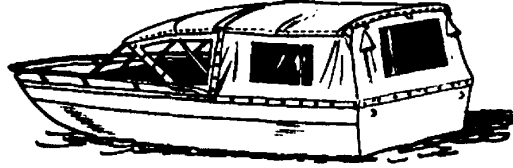
This temporary covering can be made of different materials and different fittings to best serve your needs.

Increasing productivity by insuring efficient and safe working conditions in any season.

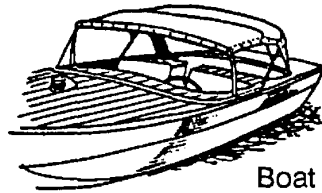
Permitting realistic contract planning and work schedules throughout the year.

RECREATIONAL CANVAS PRODUCTS

BOAT CANOPIES

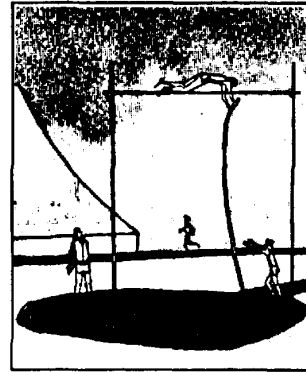


Replacement and Repairs

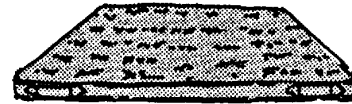


Boat Covers

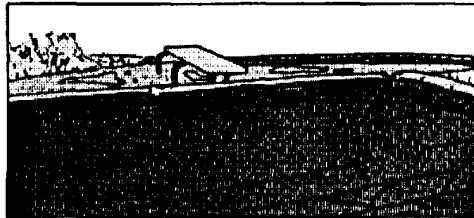
**ATHLETIC AND GYM
MAT COVERS**



EQUIPMENT AND WALL MATS



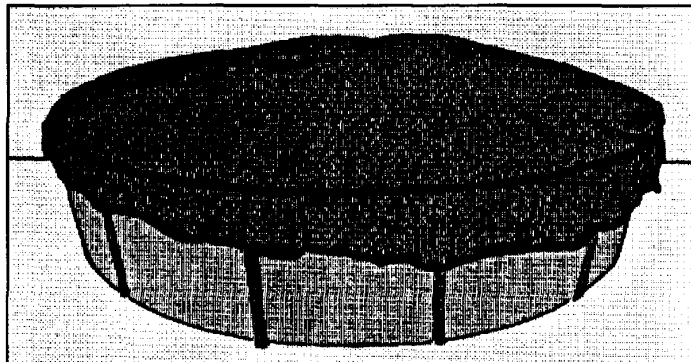
POOL COVERS



**SPORTS BAGS
PROTECTIVE AWNINGS
BARRIER CURTAINS
CONTRACT SEWING**

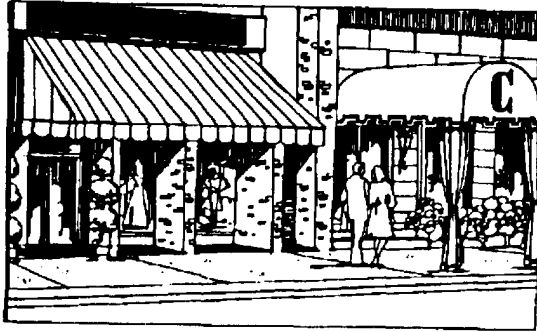
**FIELD AND
EQUIPMENT
COVERS**

Call
for more infor-
mation about
recreational
canvas products



CANVAS PRODUCTS

CANOPIES AND AWNINGS



Special Bags
Containers and
Machinery Covers

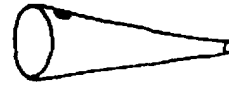
Special Marine Product

Hatch Tent
Dirt Sling
Bag Sling

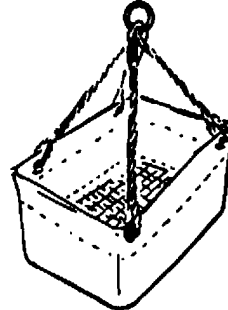
TENTS



Wind Sock



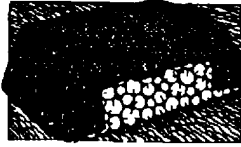
Parcel Bag



Laundry Bag



Ready-Made All-purpose covers



Firewood Covers



Patio Furniture Covers



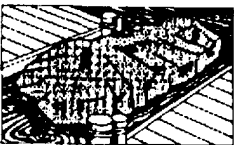
Hauling Covers



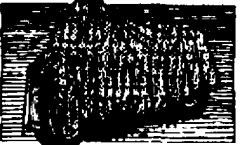
Ground Covers



Lawn and Garden



Boat Covers

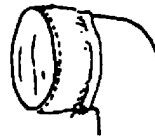


Motorcycle Covers

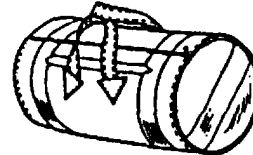


Car Covers

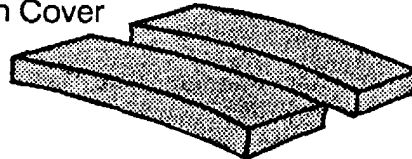
Cowl Cover



Duffle Bag



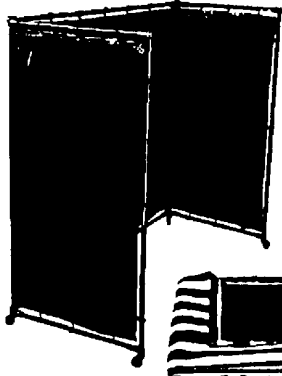
Hatch Cover



**CALL ABOUT
CONTRACT SEWING - CONTRACT
HEAT SEALING - CONTRACT GLUING**

WELDING CURTAINS

Made from an almost indestructible protective fabric.

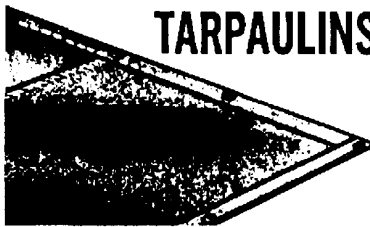


Special Materials
SILICA Used as a protective covering from heat welding splatters. Good up to 2,000degrees in most applications

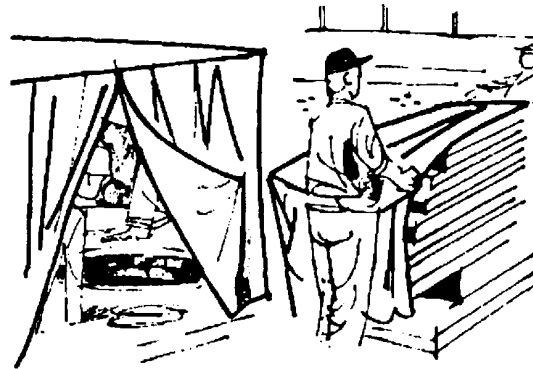


Special Materials
WELD/GLASS This is a medium weight fabric specifically designed for use in a vertical position where protection from Weld Splatter is required.

PROTECTIVE COVERINGS
TARPAULINS



ROPE IN NEW CONSTRUCTION for added strength!



CANVAS (Water Resistant or Fire Resistant)
VINYL (Coated or Laminates)
NEOPRENE COATED
POLY (Polyethylene)
ACRYLICs

IMPORTANT NOTICE

The Federal Trade Commission requires that canvas covers be marked as to weight before treatment. We have indicated below approximate weight per sq. yd., before and after treatment. Always compare weight before treatment when buying canvas tarpaulins.

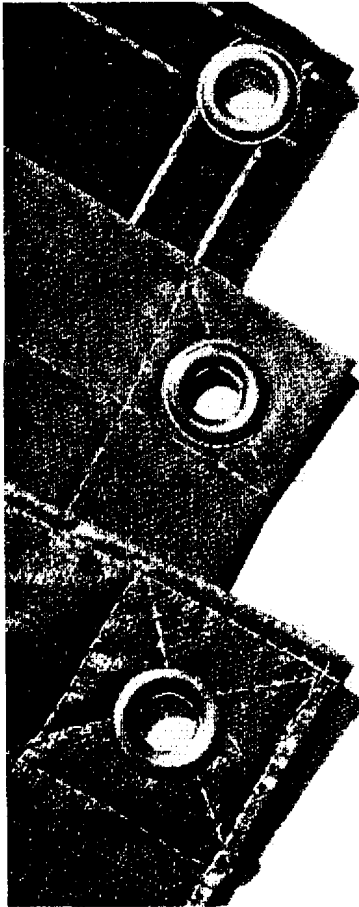
Weight Before Treatment	Approx. Weight After Treatment	Weight Before Treatment	Approx. Weight After Treatment
8-oz.	14-oz.	14.73-oz.	23-oz.
10-oz.	16-oz.	18-oz.	27-oz.
12-oz.	18-oz.	21.27-oz.	32-oz.
14.90-oz.	23-oz.		

SEWN OR HEAT SEALED

STOCK SIZES

10x12	16x20	20x40	30x60
15x15	20x20	25x40	40x60
15x20	20x30	30x40	40x100
15x30	20x35	30x50	50x100

CUSTOM SIZES TO YOUR SPECS.



CANVAS OR SYNTHETIC PRODUCTS

For Construction

Construction enclosures
Scaffold covers
Building material covers
Windbreaks
Concrete curing covers
Bridge covers
Embankment covers
Sandblast covers
Painters' drop cloths
Ditch liners

For Industry

Equipment covers
Welding curtains
Fire salvage covers
Building covers
Pallet covers
Outdoor warehousing
Outdoor sales enclosures
Dust covers
Spray-paint booth curtains
Fumigation blackets
Salt pile covers
Emergency shelters

For Transportation

Truck covers RR car covers
Barge covers
Shipping platform curtains
Airline baggage cart covers
Luggage rack covers
Tailgate curtains
Lading Tarps

For Recreation

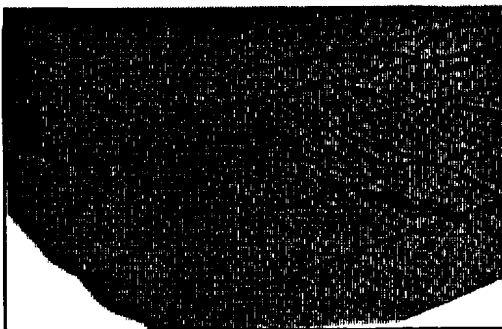
Boat storage covers
Pool covers
Athletic field covers
Camping tarps

For Agriculture

Hay covers
Farm implement covers
Bunker silo covers
Green house covers
Field tarps
Poultry curtains
Pond liners
Ditch liners
Equipments covers

HUNDREDS OF FABRICS AVAILABLE

CONCRETE CURING AND INSULATION BLANKETS



GREENHOUSE TARPS AND STERILIZATION HOSE

TRUCK COVERS

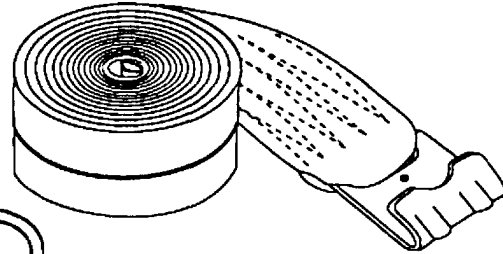


Call for more information about
Truck, Aircraft, Railroad Cargo
Control Systems.

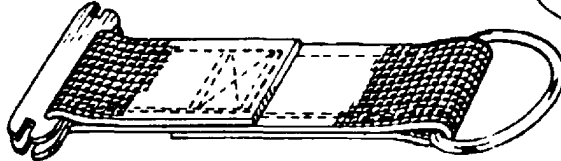
CARGO CONTROL SYSTEMS

4" Winch Strap with Flat Hook

Also available with V-Ring, Flat Hook or Sewn Loop End.

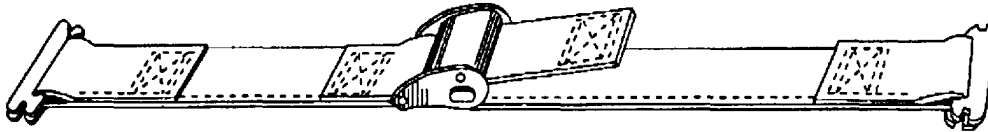


Rope Tie-Off

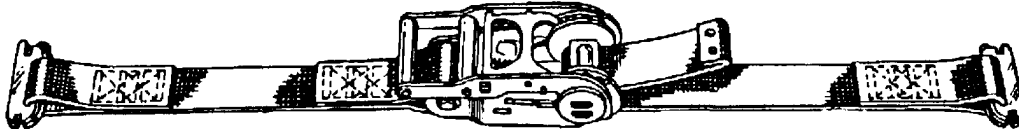


End Fittings Not Shown
 Pallet Hook
 Hook and Keeper
 Snap Hook

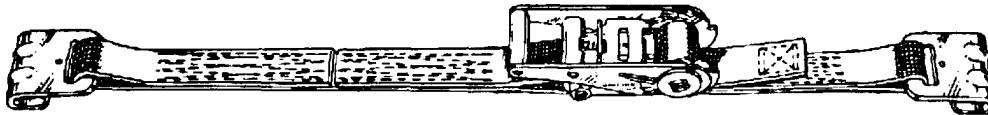
Cam Buckle, Logistic Strap with Spring Fitting



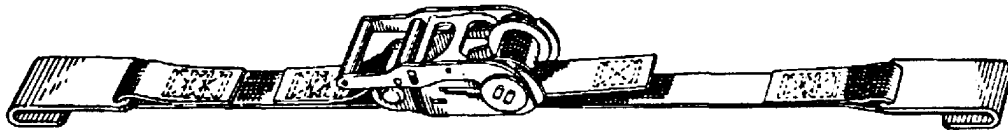
Standard 1-3/4" Ratchet Buckle with Spring Fitting



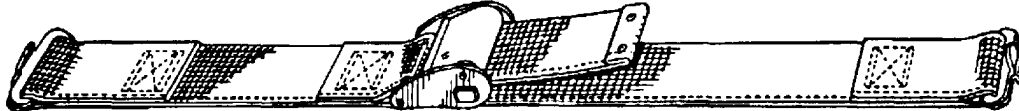
Hand Ratchet Buckle with Hook End Fitting



Hand Ratchet Buckle with Flat Hook End Fitting

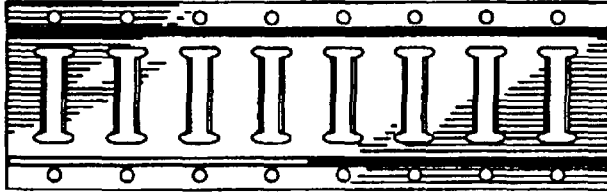


Cam Buckle with 2 Piece End Fitting



CARGO CONTROL SYSTEMS

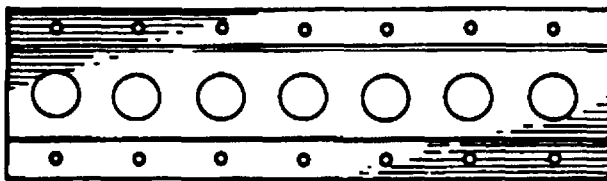
Horizontal Track
for spring end fittings



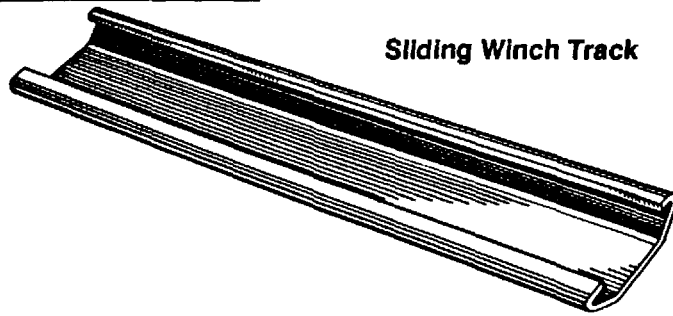
Vertical Track
for spring end fittings



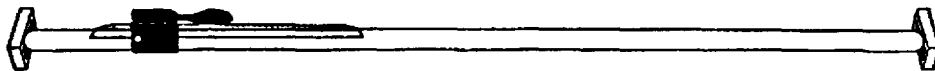
Horizontal and Vertical Track
for the 2 piece end fittings



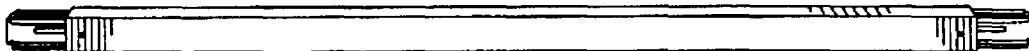
Sliding Winch Track



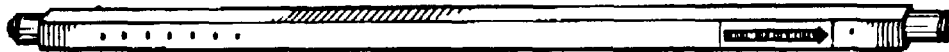
Saf-T-Lok Bar



Heavy Duty Aluminum Beam



Square Shoring Bar



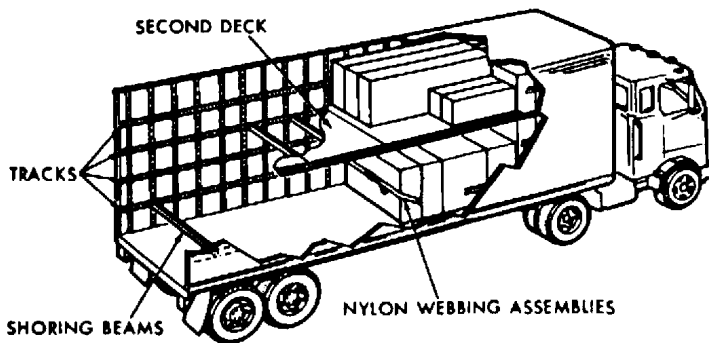
Round Shoring Bar



CARGO CONTROL SYSTEMS

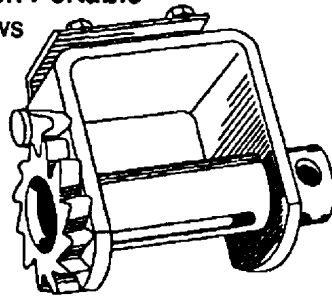
for trucks, moving vans,
railroads, marine, local delivery
and in-plant handling.

This is an efficient, low-cost logistic system designed to keep almost any type of load under control while being moved. Its primary function is to prevent personal injuries, reduce cargo damage, and avoid equipment breakage. It also offers additional benefits, such as faster loading and un-

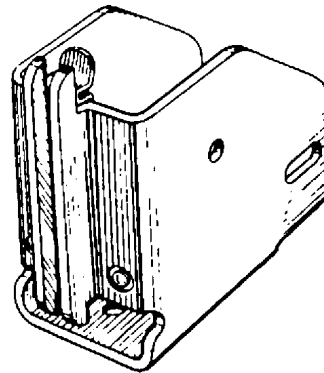


loading, effective compartmentalization of load, speedier in-plant material handling, and reduction of direct operating and packaging costs. This has available a wide range of cargo control products which make possible the development of customized systems for most applications.

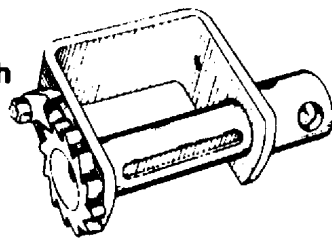
Standard Winch Portable
with 2 set screws



Reinforced Wood Beam Socket



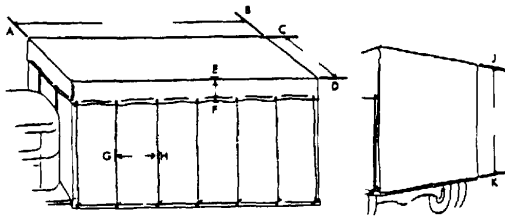
Standard 4" Weld-on Winch



Winch Bars Available

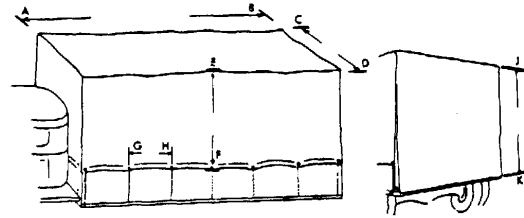
**ALL HARDWARE AND COMBINATIONS
CAN NOT BE SHOWN.
CALL OR STOP IN TO DESIGN THE
SYSTEM YOU NEED.**

HOW TO MEASURE and fit TRUCK TARPS



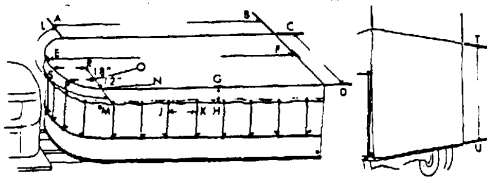
Measure Line AB to specify length of truck panel
 Measure Line CD to specify width of truck panel
 Measure Line EF to specify overhang of tarpaulin
 Measure Line GH to specify position of grommets
 Measure Line JK to specify length of back drop

**Square Front,
 Square Back, Flat Top**



**Flat Front, Flat Back,
 Stake Sides**

Measure Line AB to specify length of truck panel
 Measure Line CD to specify width of truck panel
 Measure Line EF to specify overhang of tarpaulin
 Measure Line GH to specify position of grommets
 Measure Line JK to specify length of back drop

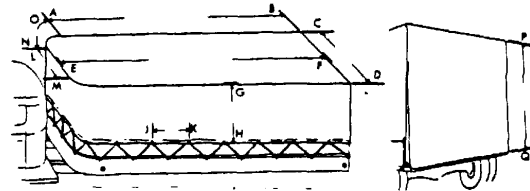


**Round Front,
 Square Back, Flat Top**

Measure Line AB to specify length of truck panel to curve
 Measure Line CD to specify width of truck panel
 Measure Line EF to specify center length of panel
 Measure Line GH to specify overhang of tarpaulin
 Measure Line JK to specify position of grommets
 Measure Line LM to specify length of curve in front panel
 Measure on Line NO 12" then measure line PO
 Measure on Line OR 18" then measure line RS
 Measure Line TU to specify length of back drop

**REINFORCED
 FASTENERS**

Six Sizes
 from
 10 to 72"

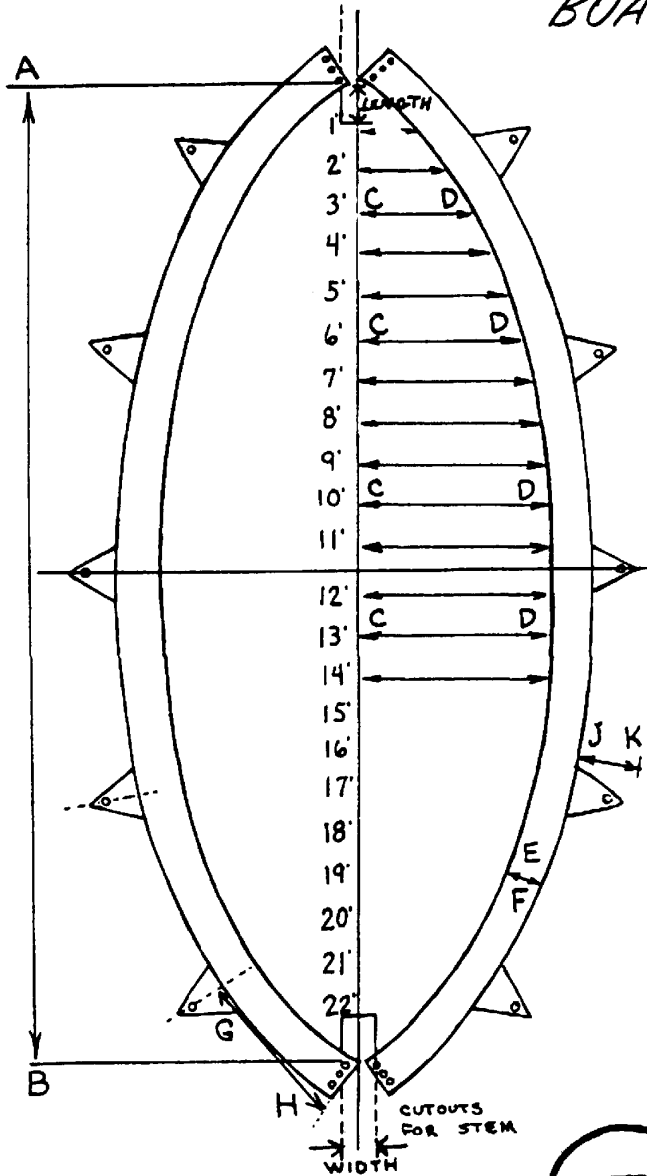


**Flat Front with
 Rounded Back,
 Square Back, Flat Top**

Measure Line AB to specify length of truck panel to curve
 Measure Line CD to specify width of truck panel
 Measure Line EF to specify center length of panel
 Measure Line GH to specify overhang of tarpaulin
 Measure Line JK to specify position of grommets
 Measure Line LM to specify width of truck panel to curves
 Measure Line ON to specify length of arc of curve
 Measure Line PQ to specify length of back drop

**A WIDE VARIETY OF STANDARD
 AND CUSTOM CANVAS PRODUCTS
 ARE AVAILABLE.
 CALL FOR DETAILS.**

HOW TO MEASURE BOAT TARPULLINS



MAKE OF BOAT _____

NO. PERSONS _____

BEAM _____

CUBIC FT. _____

Measure Line AB _____
length of cover.

Measure Lines CD _____ every
foot from center ridge-
pole to gunwale.

Measure Line EF _____ depth
of skirt.

Measure Lines GH _____ end of
cover to center line of
first flap...and
continue for length
of cover.

Measure Line JK _____ depth
of flap.

Measure length and
width for davit
connection.



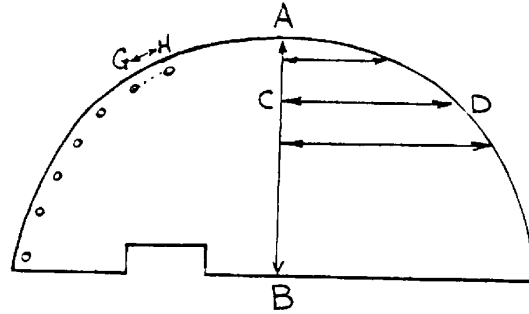
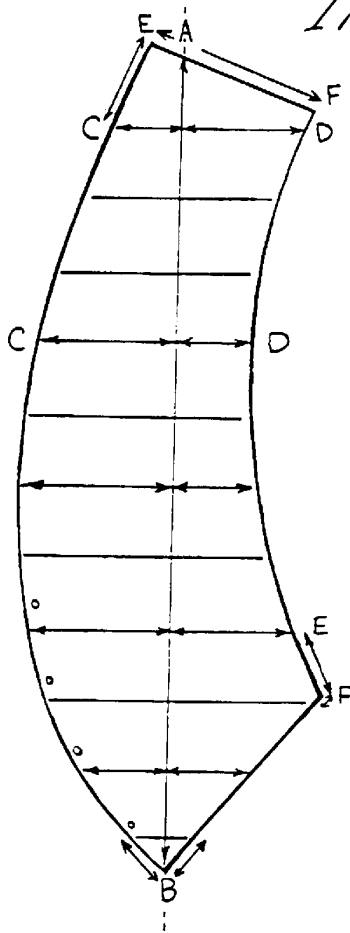
CANVAK

Canvak waterproofs Tents, Tarpaulins,
Covers

COLORS

Green, Olive Drab, Colorless, Buff,
Apple Green, Spruce Green, Yellow,
Blue, Orange, Brown

HOW TO MEASURE AWNINGS and IRREGULAR SHAPES



- Establish vertical distance AB.
- Measure lines CD every foot of length.
For irregular shape measure lines C to vertical...and vertical to D.
- For special corner; Measure lines EF.
- Locate Grommet Holes
GH (distance center to center)
- Locate Pipe Frame.
- Locate where awning lays against pipe for reinforcement.
- Include additional information as needed for special order.
- Indicate type of material and color required.

If in doubt about measuring, send the old cover.

Indicate any changes by marking on cover.

MATERIALS IN STOCK

- . DRILL
- . OUNCE GOODS
- . NUMBERED DUCK
- . FLAX
- . SYNTHETICS
- . LAMINATED FABRICS
- . COATED FABRICS
- . HYPALON
- . NEOPRENE
- . VINYL
- . POLYS
- . FIBERGLAS

Black - Grey - Yellow - White - Green